

ZL2GBX

No active session...

System Folder

Inbox (4 unread)

Read Items (0)

Outbox (0)

Sent Items (33)

Saved Items (0)

Deleted Items (3)

Drafts (0)

Personal Folder

Global Folder

Contacts

AREC CENTRAL

AREC_NORTHERN_AUC

AREC_NORTHERN_GISB

AREC_SOUTHERN_REGI

AREC-RUWHENUA

HOME_EMAIL

HOME_EMAIL2

Settings

Message

Attachments

Move To:

Saved Items

Delete

Open Session: Vara FM Winlink

Logs

Help

Winlink Express Setup...

Font for text...

Font for lists...

Set color themes

GPS / Position Reports...

Winlink Catalog Requests...

GRIB file request...

Preferences...

Update User Options...

Message Notification and Forwarding

Form settings...

Auto session open on startup...

Contacts...

Group Addresses...

Add Personal Folder...

Add Global Folder...

Hybrid Network Parameters

Propagation calculation parameters

View Usage Statistics

View background tasks...

Backup and restore databases...

Exit

Message ID	Size	Source	Sender	Recipient	Subject
KF24Q8C	49508	SMTP	SMTP:gibarton@...	ZL2GBX	50k pic uhf
5JIQUU	806	KN4LQN	KN4LQN	W0AYE...	Winlink Wednesday Roster Published (24 July 2024, Episode #411)
G6RIDBL	703	KN4LQN	KN4LQN	W0AYE...	Winlink Wednesday Net Confirmation (Episode #411)
ZFWTC	1118	ZM1SEA	ZM1SEA	ZL4ROB...	EmComm Training Organization - Excercise
41GC2GK	31049	ZM1SEA	AREC-CHECKIN	ZK1EBW...	AREC-Check-In Net Results Dated 30.06.24
GZRT64	493	AREC-C...	AREC-CHECKIN	ZL2GBX	ACK: Winlink Check-in EXERCISE - ZL2GBX - Home QTH, Blenheim - Branch 22
0BVN1L0	54154	ZM1SEA	AREC-CHECKIN	ZK1EBW...	AREC-Check-In Net Results Dated 23.06.24
BG5N0BZ	849	ZM1SEA	AREC-CHECKIN	ZK1EBW...	EmComm training Exercise June 20th
41QEP	62762	ZM1SEA	AREC-CHECKIN	ZK1EBW...	AREC Check-In Net Results Dated 16.06.24

G

(UTC)

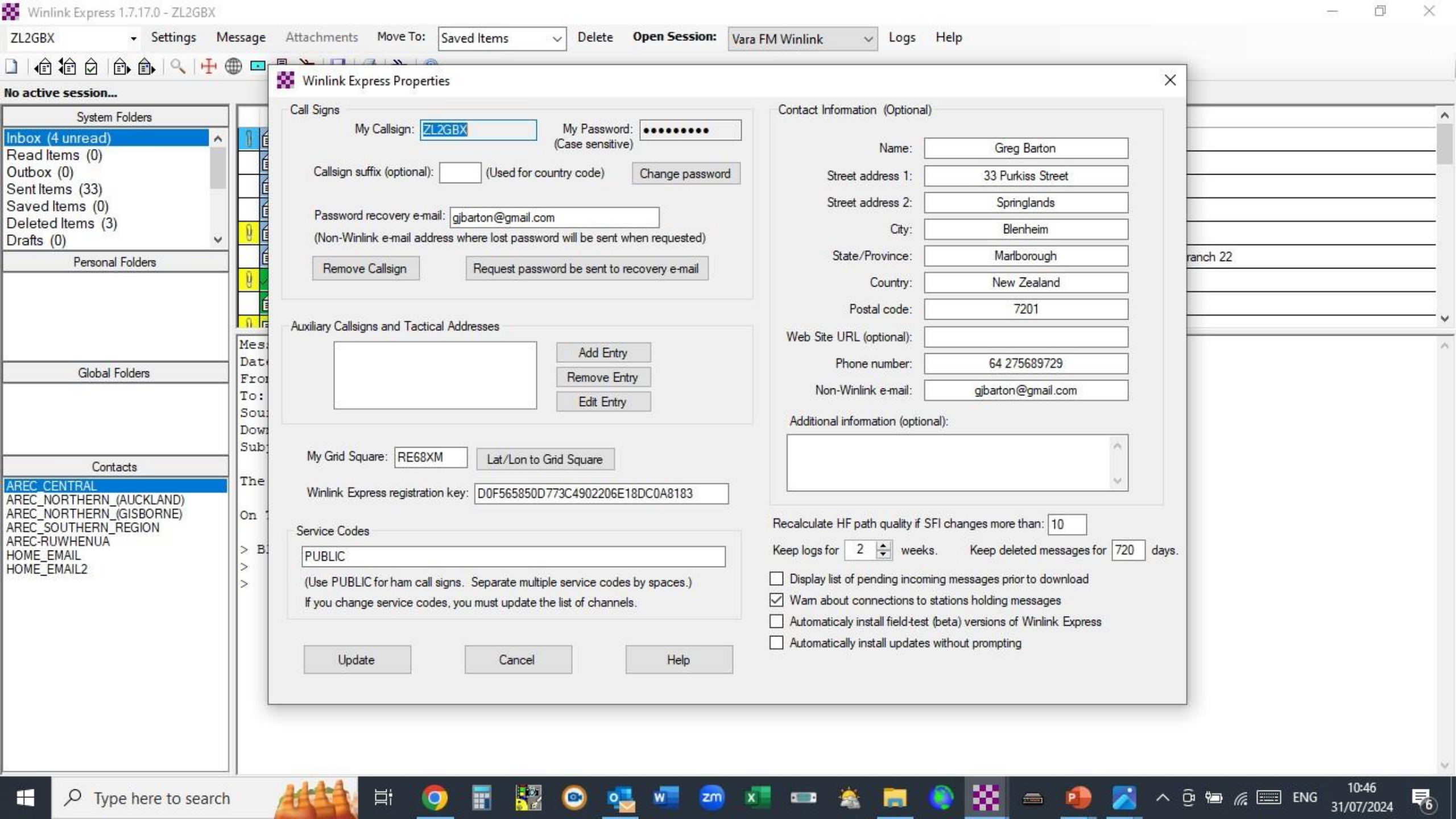
1SEA

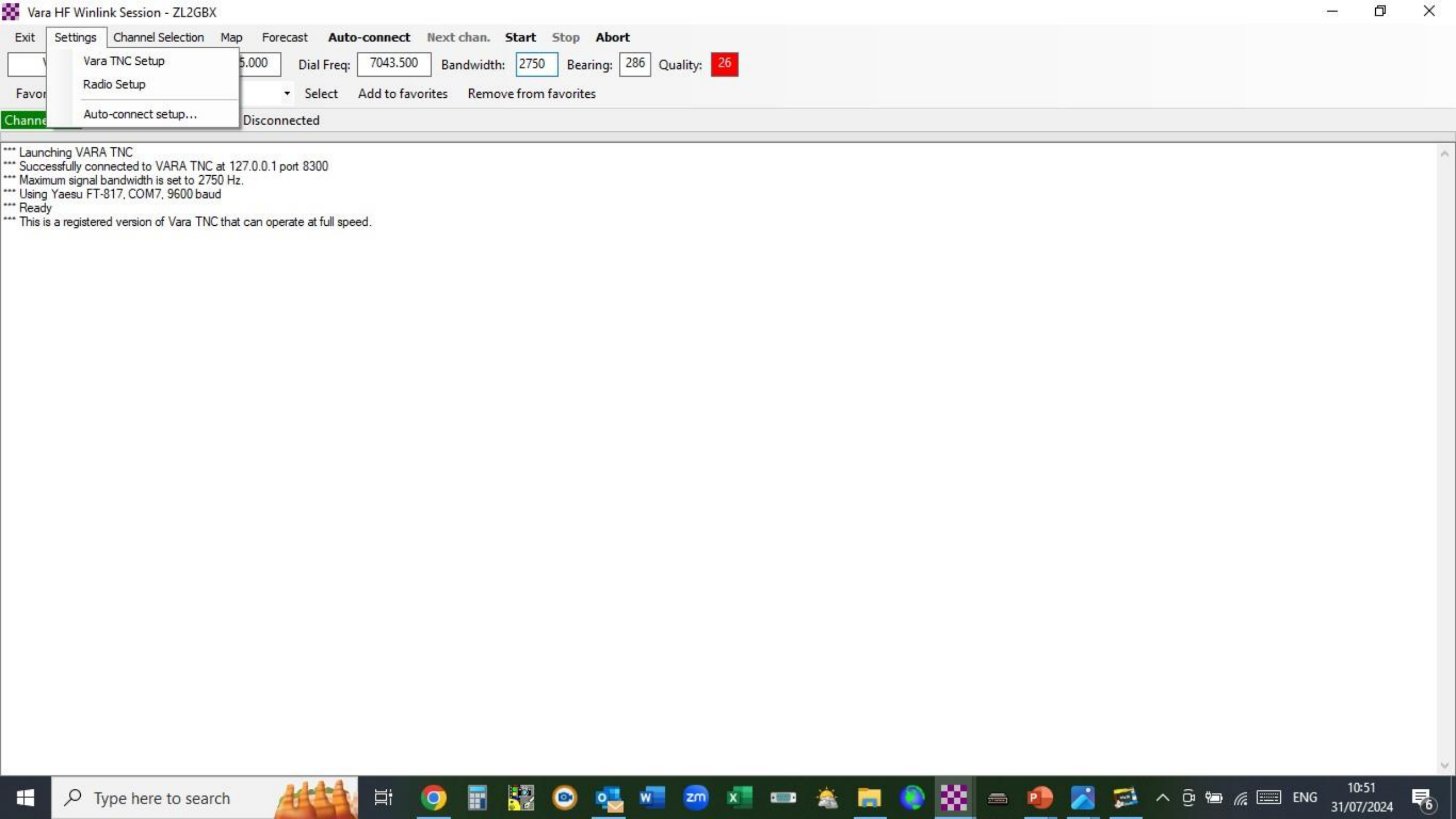
321

aped over the lazy dogs eh

23 pm , <ZL2GBX@winlink.org> wrote:

fox jumps over the lazy dog






```
*** Launching VARA TNC
*** Successfully connected to VARA TNC at 127.0.0.1 port 8300
*** Maximum signal bandwidth is set to 2750 Hz.
*** Using Yaesu FT-817, COM7, 9600 baud
*** Ready
*** This is a registered version of Vara TNC that can operate at full speed.
```

Windows taskbar showing search bar, taskbar icons (Chrome, Excel, etc.), system tray (clock, date, network, etc.).

Exit Settings Channel Selection Map Forecast **Auto-connect** Next chan. Start Stop Abort

VK2RZ Center Freq: 7045.000 Dial Freq: 7043.500 Bandwidth: 2750 Bearing: 286 Quality: 26

Favorites: Select Add to favorites Remove from favorites

Channel Free In: 0/0 Out: 0/0 BPM: 0/0 Disconnected

*** Launching VARA TNC
 *** Successfully connected to VARA TNC at 127.0.0.1 port 8300
 *** Maximum signal bandwidth is set to 2750 Hz.
 *** Using Yaesu FT-817, COM7, 9600 baud
 *** Ready
 *** This is a registered version of Vara TNC that can operate at full speed.

Vara Setup

Virtual TNC host address/name: 127.0.0.1

Virtual TNC command port: 8300 Data Port: 8301

Maximum signal bandwidth: 2750

(Vara 2750 requires radio TX filter set for 100-2900 Hz and RX bandwidth of 3000)

VARA Modem location: C:\VARA\Vara.exe

☒ Automatically launch Vara TNC when session is opened
☒ Show the Vara TNC screen when it's launched
☒ Identify with Morse code at end of session
☐ Log Vara commands to Vara(date).log file

Update Cancel

11:01

VoLTE1 82%



WoAD



NEW MESSAGE



NEW MESSAGE FROM TEMPLATE



<input type="checkbox"/>	Flags	Date	From	To	Subject	Message	Id	Size
<input type="checkbox"/>		2024-07-23 14:44:00	SERVICE	ZL2GBX	Undelivered Message	Your message ...	VYDZLC VPTFTW	597
<input type="checkbox"/>		2024-07-08 20:47:00	AREC-CHECKIN	ZL2GBX	Re: AREC-Che...	Hi Greg, its becaus...	HYXZMP CZJRKK	7968
<input type="checkbox"/>		2024-07-08 20:44:00	AREC-CHECKIN	ZL2GBX	Re: Winlink Check-in E...	Well done Greg at be...	KM4NUK LOQFA2	1675
<input type="checkbox"/>		2024-05-24 21:50:00	ZL4HZ	ZL2GBX	Re: Gateway i...	Hey Greg, ...	STNL82 UA80XA	1816



Inbox



DELETE



ARCHIVE



MARK UNREAD



11:00

VoLTE1 82%



WoAD



NEW MESSAGE



NEW MESSAGE

◆ Name	◆ Status	◆ Extended status	◆ Protocol	◆ Settings	◆ Auto-connect
Packet	Stopped		Packet (Outgoin...	ZL2GBX-1 0 [Audio]	None
Telnet	Stopped		Telnet Winlink	CMS	None
Vara FM	Stopped		VARA FM (Outgoin...	ZL2GBX-1 0 [TCP/IP]	None



START



STOP



Messages



Settings



Sessions



Logs



Contacts



Other



About

Current setup in Marlborough

There is a VHF/UHF RMS gateway at ZL2GBX operating 24/7

- 2 x Tait 8200 radios and controller (supplied free by AREC)
- USB connecting cable (supplied free by AREC)
- A windows PC (basic peripherals) *
- Winlink Express (free) and VARA software (free trial / 60€)*
- 12v power supply *
- 2M and 70cm antennas and cabling *
- Internet connection *

* (currently supplied by ZL2GBX)

Several members have configured Winlink clients using HF or VHF/UHF

Current access via HF is via the available gateways in NZ / Australia and beyond
VHF/UHF access is via the ZL2GBX-10 or ZL2GBX-12 gateways – there are likely to be additional gateways in Wellington that may be accessible later.



- AREC Interface box (USB to PC, RS232 to transceivers)
- VHF transceiver
- UHF transceiver
- HP Elitedesk W10 PC

Vara FM Winlink Session - ZL2GBX

Exit

Settings

Channel Selection

Start

Stop

Abort

Connection:

Direct

via

Freq.:

0.000

Range:

0

Bearing:

000

Favorites:

Select

Add to favorites

Remove from favorites

In: 0/0

Out: 0/0

BPM: 0/0

Disconnected

Time to next Autoconnect = Disabled

*** Launching VARA FM TNC: C:\VARA\VARA FM\VARA FM\VARAFM.exe

*** Successfully connected to VARA FM TNC at 127.0.0.1 port 8300

*** Ready

*** This is a registered version of Vara TNC that can operate at full speed.

Vara FM Channel Selector

Select Channel

Update Table Via Internet

Update Table Via Radio

Exit

Stations found within 300 kilometers of your grid square.

Callsign	Frequency (MHz)	Channel Width	Grid Square	Group	Distance (km)	Bearing (Degrees)
ZL2GBX-10	144.650	Wide	RE68XL	PUBLIC	004	180
ZL2GBX-12	432.675	Wide	RE68XL	PUBLIC	004	180
ZL2SLD-10	144.650	Wide	RE78IR	PUBLIC	067	070
ZL2SLD-12	432.675	Wide	RE78IR	PUBLIC	067	070
ZL3EX	145.300	Wide	RE66HL	PUBLIC	251	205
ZL3EX	432.675	Wide	RE66HL	PUBLIC	251	205

bps

0.8

0.6

0.4

0.2

0.0

0.8

0.6

0.4

0.2

0.0

VU

Audio Input: -69 dB

CPU

CPU Usage: 34 %

DATA

ACK

NACK

REQ

IDLE

BREAK

QRT

TX Delay

S/N

RX

Disconnected

WIDE

TCP

DCD

The Winlink Radio E-mail Network

- No infrastructure is needed. Extremely resilient.
- Winlink provides e-mail from *any* point on the earth – including the middle of the ocean (or within your county/Jurisdiction).
- Messages are sent via HF, VHF/UHF radio, and telnet.
- Winlink software and use of the system are *free of charge*.
- Hardware costs are minimal. Less than one Motorola P25 handheld.
- Winlink provides 100% accurate transmission.
- AES-256 transmission encryption is available (not on amateur radio).
- Winlink is an interoperable store-and-forward system providing time and frequency *independence*.
- Winlink is interoperable between commercial radio, amateur radio, Internet e-mail, cell phone, satellite and other services.

What next?

Establish a permanent Hybrid RMS (HF/VHF/UHF)

- Location – secure, quiet (HF), accessible, power, internet
- Critical in the event of AF8 or other natural disaster or cyber outage

Grow user base and encourage regular exercises to maintain operational competence

- AREC Check-ins
- Winlink Wednesday etc
- Develop hardware solutions – phone/handheld, PC/base station

All the links you'll ever need

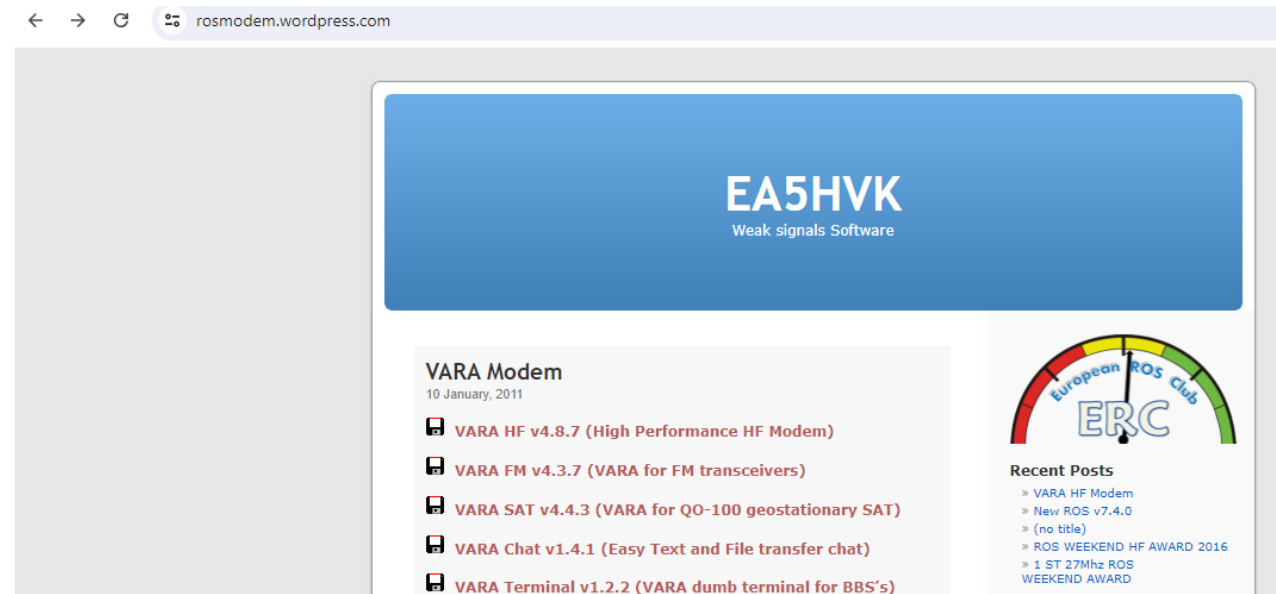
<https://winlink.org>

Winlink



<https://rosmodem.wordpress.com/>

VARA




← → ↻ winlinkwednesday.net ☆ 📁

Solar-Terrestrial Data
29 Jul 2024 0146 GMT
SFI: 214 SN: 189
A-Index: 7
K-Index: 2
X-Ray: C2.5
304A: 150.1 @ SEM
Calculated Conditions

Band	Day	Night
80m-40m:	Poor	Good
30m-20m:	Poor	Good
17m-15m:	Good	Good
12m-10m:	Good	Poor
Signal Noise:	S1-S2	

Click to Install Solar Data On your Web Site
<http://www.n0nbh.com>
Copyright Paul L Herrman 2023

Home of the Original



QRZ call sign lookup:

Winlink Wednesday
Current P2P dial frequency:

Off the Air

[Winlink Wednesday Change Notices](#)
(updated 05/02/2024)

Current Week's
[Net Reminder](#)
(updated for 07/31/2024)

<http://winlinkwednesday.net>

<http://uz7.ho.ua/packetradio.htm>

wavetalkers.com


lots of videos on Youtube

← → ↻ ⚠ Not secure uz7.ho.ua/packetradio.htm ☆

Solar-Terrestrial Data
29 Jul 2024 0146 GMT
SFI: 214 SN: 189
A-Index: 7
K-Index: 2
X-Ray: C2.5
304A: 150.1 @ SEM
Calculated Conditions

Band	Day	Night
80m-40m:	Poor	Good
30m-20m:	Poor	Good
17m-15m:	Good	Good
12m-10m:	Good	Poor
Signal Noise:	S1-S2	

Click to Install Solar Data On your Web Site
<http://www.n0nbh.com>
Copyright Paul L Herrman 2023



Welcome to the personal page

UZ7HO

🇬🇧 🇷🇺

[Home](#)
[Contesting](#)
[Guestbook](#)
[Log search](#)
[Packet-Radio](#)

The software Packet-Radio TNC

I am developing a software dual-port Packet-Radio TNC that uses a soundcard as a modem and supports AX.25 protocol. It has been tested on Windows XP, Vista, 7, 8, 10 and has proved stable in operation. The Soundmodem has two TCP/IP interfaces to link with client application: AGW PE and (X)KISS. In case of AGW PE interface, this modem is a direct replacement of original AGW Packet Engine and emulates AGW PE API. The Soundmodem may be used to build EMCOMM, APRS, BBS, Node station, for satellites etc. It supports such modes:

Soundmodem <ul style="list-style-type: none"> • AFSK 300, 600, 1200, 2400 bps • (D)BPSK 300, 600, 1200, 2400 bps • (D)QPSK 2400, 3600, 4800 bps • (D)8PSK 4800 bps 	High-Speed Soundmodem <ul style="list-style-type: none"> • G3RUH 4800, 9600, 19200 bps • Manchester 1200, 2400, 3600, 7200 bps • HAPN 4800 bps • GOMX-1/3, Mobitex-NX (BeeSAT-2/4), AAUSAT-4, LilacSat-2 decoders
---	--

UZ7HO SoundModem

Who are some key players in Winlink?

ARSF (Inc) Non-profit organisation - Winlink is their main project (since 2006)

Steve Waterman K4CJX One of the original Winlink Development team
(manages RMS registrations)

Jose Ros EA5HVK Developer of the VARA software

Nigel Goldstone ZL1SEA – AREC and operator of the initial RMS gateway in Kaeo

David Chesterfield KN4LQN – coordinator of Winlink Wednesdays etc

EM-COMM – umbrella term – ARRL / FCC / ETO etc